



Tralee Times®

August—September 2009

www.traleetimes.com



50th Anniversary Rose of Tralee Festival

The Rose of Tralee

By William Pembroke Mulchinock

The pale moon was rising above the green mountains,
The sun was declining beneath the blue sea,
When I strayed with my love by the pure crystal fountain,
That stands in the beautiful Vale of Tralee.

She was lovely and fair as the rose of the summer,
Yet 'twas not her beauty alone that won me.
Oh no, 'twas the truth in her eyes ever dawning
That made me love Mary, the Rose of Tralee.

The cool shades of evening their mantle were spreading,
And Mary all smiling was listening to me.
The moon through the valley her pale rays was shedding,
When I won the heart of the Rose of Tralee.

She was lovely and fair as the rose of the summer,
Yet 'twas not her beauty alone that won me.
Oh no, 'twas the truth in her eyes ever dawning
That made me love Mary, the Rose of Tralee.

In the far fields of India 'mid war's dreadful thunders,
Her voice was solace and comfort to me.
But the chill hand of death has now rent us asunder,
I'm lonely tonight for the Rose of Tralee.

She was lovely and fair as the rose of the summer,
Yet 'twas not her beauty alone that won me.
Oh no, 'twas the truth in her eyes ever dawning
That made me love Mary, the Rose of Tralee.

The Festival as it is today stems from Tralee's Carnival Queen, once a thriving annual town event, fallen by the wayside due to post-war emigration. In 1957 Race Week Carnival was resurrected in Tralee that featured a Carnival Queen. A year later a group of local business people met in *Harty's Bar* in Castle Street, Tralee and decided to revamp the Carnival in a way that would regenerate the town, encourage tourism and keep the race crowd in town overnight.

<http://www.roseoftralee.ie/catalog/>

Ring Road—Tralee

Yes there is a very real need for a ring road around the town. However, I maintain that in the current climate of fiscal decay that such a scheme will not materialise.

There may be a solution however. A cheaper, salvation for road users.

At present and for many years motorists have been using minor, third class roads to navigate their way around the town in times of peak traffic flow.

Unfortunately, many of these roads are too narrow and with poor foundations are therefore unsuitable for large volumes of traffic.

But by widening them slightly and restricting the type of vehicles that use them and physically restricting the speed limits there could be a solution.

The positives are—employment schemes for: construction workers, contractors, improving output from quarries, builders providers, machinery hire etc.

The aim: keeping people off the dole, increasing output from businesses and ultimately, keeping traffic flowing.

As for costs and funding???

You may wish to comment on this especially if you have more experience than I in these types of operations.



Kerry All—Ireland Football Campaign(s) 2009

As I predicted in a previous edition, the talent and experience of the Kerry team and management would prevail. I know that they are only at the semi-final stage now but I still have a strong sense that the team is well placed to go further.

For what it's worth, I expect that Kerry will face Cork in the September decider!

Let's have positive media comment and support for all involved from now on !

Best of luck to the Minor team also, I do think they have the team and mentors to win an All—Ireland this year.

CYCLING / WALKING

I may be wrong, but I have a feeling that there may be more children walking or cycling to school from September.

If so, let's hope that we are all properly prepared for it.

Parents should ensure that their children are adequately 'kitted out' and familiar with correct road manners.

Drivers of vehicles may need to factor into their driving the hazards that may occur, particularly at junctions.

Casement Station—Tralee

150 years ago the rail line from Killarney to Tralee was completed, and opened on the 18th July 1859, thus linking Tralee with the rest of the country by train. This would have been an immense feat of engineering for it's time and would have put Tralee firmly on the map. Alas, there has been no real significant celebration or remembrance of that great historical event. The import of the station, of the train, in terms of local employment and daily life throughout the town and environs at the time would have been immense. The station was renamed Casement Station in 1966 in commemoration of Sir Roger Casement.

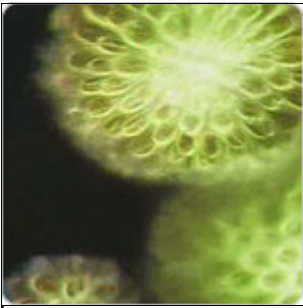
Traffic Lights—DELAYS!

Yes, I am old enough to remember the 'excitement' at the announcement that Tralee was to get its first ever set of traffic lights!

Today, however, there is indeed a problem with traffic lights i.e. unwarranted delays at the lights throughout the town. This is most frustrating when one is sitting at a red light and there is no traffic. This happens more at night obviously.

In this age of technology surely the installation of 'smart' lights cannot be too difficult, although there are probably budgetary constraints. Can we not at least see a way to simply reduce the red light timing during the off-peak hours (?). Recently I was in London and while I was waiting for someone, near a busy traffic junction, I was curious enough to time the red light. Over a period of ten minutes the lights were on red for **15 second** intervals (!) Beat that!





ExxonMobil and Biofuels.

ExxonMobil is launching a significant new program to research and develop next-generation biofuels. Fuels composed of or produced from biological raw materials, such as plants, photosynthesis organisms or animal waste from photosynthetic algae. This is part of our ongoing commitment to advance breakthrough energy technologies to help address the world's long term energy challenges.



Meeting the world's growing energy demands will require a multitude of sources. Biofuel from algae could be a meaningful part of the solution in the future because of

its potential as an economically viable, low emissions transportation fuel.

As part of the program, ExxonMobil Research and Engineering Company is teaming up with Synthetic Genomics, Inc (SGI) to develop, test, and produce biofuels from photosynthetic algae. Algae produce bio-oil that can be processed into biofuels similar in structure to today's gasoline and diesel fuels. This helps ensure the fuels are compatible with existing transportation technology and infrastructure.

<http://www.exxonmobil.com/Corporate/default.aspx>

The Pikeman of Tralee

The history of the Pikeman of Tralee provides a good example. Kerry's memorial to the men who fought and died for Ireland in 1798 is located in Denny Street, Tralee. A full-length figure, with purposeful expression in the act of striding forward, the pike-man radiates the sense of purpose and defiance befitting the commemoration of an armed rebellion. The memorial not only commemorates the men of '98 but, as the panels on the elaborately designed pedestal indicate, also the risings of 1803, 1848 and 1867. Unveiled on 6 June 1939 it quickly became a permanent landmark in Tralee. It was not the first '98 monument to be erected in Denny Street. It replaced one unveiled in 1905 (fig.2). In 1901, in the climate of resurgent nationalism following the centenary celebrations of the 1798 Rebellion, the Kerry County Board of the GAA



decided to initiate a movement for the erection of a '98 memorial in Tralee. A local stonemason was commissioned to carve the statue and plinth. The figure depicts a young pike-man, alert and at the ready. This statue remained in place until 1921 when, during the War of Independence, Black and Tans dragged it from its pedestal and smashed it. Six years later a local committee, three of whom comprised members of the original committee, decided to replace it. Rather than hire a local stone carver, the renowned Kerry-born international sculptor, Jerome Connor, was invited to sculpt the replacement figure. But he delayed so long in completing the commission, being dissatisfied with his initial design that the committee took him to court. Albert Power, a highly regarded Dublin sculptor was subsequently called upon to complete the scheme. By June 1939 this third pike-man was ready for unveiling. Power's figure, in terms of its design, recalls that of Connor, and, as one would expect of highly-trained professional artists, theirs are altogether more convincing representations than the original.

...this man represents his country, This man is Ireland.

On the occasion of the unveiling of the foundation stone for the first monument in 1902, Maud Gonne McBride was asked to perform the ceremony. Thirty-seven years later she was back to unveil the replacement.

The Pikeman of Tralee, like other monuments of its kind, acts as a fascinating barometer of the cultural and political climate at the time of its production and later. It also reveals a contradictory feature of public monuments, where embodied in a single symbolic form, the permanent and impermanent become interchangeable.

History
IRELAND

<http://www.historyireland.com/volumes/volume6/issue2/news/?id=113345>



NCT Total FULL TESTS by Year

YEAR	2000	2001	2002	2003	2004	2005	2006	2007	2008
No.	303,103	378,467	536,071	631,257	614,227	624,619	681,799	686705	835,802

NOTE: January — end June 2009 — 464,401 Full Tests x €50 = €23.2 million

**Completion date for Castleisland
By-Pass: December 2010**

AA AARoadwatch.ie
Your travel and motoring essentials

For information and road conditions in Co. Kerry:
<http://www.aaroadwatch.ie/traffic/county.asp?aid=13>

Tourism in Ireland—An Overview



Fáilte Ireland
National Tourism Development Authority

Total Overseas Visitors (millions)

2000	2001	2002	2003	2004	2005	2006	2007	2008
6.2	5.8	5.9	6.2	6.4	6.8	7.4	7.7	7.4

Total Tourism Revenue (€ billions)

2000	2001	2002	2003	2004	2005	2006	2007	2008
4.3	4.8	4.8	5.0	5.1	5.4	6.1	6.5	6.3

When did Tourists Arrive ? % (The Top 3 Times)

Time	2004	2005	2006	2007	2008
October—December	22	22	22	22	21
January—March	17	18	17	18	20
August	12	12	12	12	12

Activities Engaged In... (000)

ACTIVITY	2004	2005	2006	2007	2008
Hillwalking / Hiking	259	280	335	511	517
Angling	93	56	106	128	142
Golf	138	98	169	194	141
Cycling	85	43	78	102	120
Equestrian	31	27	37	50	50



JOBSEEKERS: Are you prepared to offer your skills / experience for free, for a short duration, if it meant the possibility of getting a paid job? (either immediately, as a direct

result of your offer or at some point in the future)

EMPLOYERS: Is there an area or idea for your business that could generate profitability but you cannot afford to test / research this area / idea? Would you like the ability to witness firsthand the skills / experience of a potential new employee?

Talent Tank™ is the home to hundreds upon hundreds of individuals and employers using a unique new initiative to help them during the current economic crisis. The idea is really simple, it is easy to use and it is **FREE!** The more individuals that register and post offers on the site, the more employers search for offers and vice-versa, so tell your friends, family, colleagues etc !!

Talent Tank, 3 Merchant's Gate, Merchant's Road, Galway, Ireland.

www.TalentTank.ie Lo-Call: 1890 646 866

Surge in Pupil Numbers in Primary Schools

A study commissioned by the Department of Education shows that the soaring birth rate in Ireland is creating a need for many more schools.

The study was conducted using data from the Central Statistics Office, the General Register Office, and the Department of Social and Family Affairs.

According to the figures, the number of births last year rose to 72,000, compared to 48,255 fifteen years ago. This means that there will be over 500,000 primary school pupils in our schools for the foreseeable future.

Inward migration is another factor which is helping to push up the number of enrolments in schools.

In 2000, the number of primary school children was less than 440,000. In 2005, it had risen to 457,889 and it has been rising since.

This growth in numbers is expected to reach second level by 2016, resulting in an increase of 51,500 pupils in post primary schools and an estimated need for 50 new schools at this level.

INTO general secretary John Carr said the new figures showed the scale of the task facing the Department of Education and Science.

"The birth rate has increased by more than 40 per cent in recent years. This means additional schools, classrooms and teachers will have to be provided. The department will have to streamline procedures, and timeframes for the delivery of new schools and classrooms must be shortened," Mr. Carr said.

(Source: Irish Independent)

KERRY Co. COUNCIL

Road Works Programme 2008

Maintenance & Improvement of National, Regional & Local Roads

The Road Works Programme for 2008 has been prepared based on the level of funding provided by means of Grants from the Department of the Environment, Heritage and Local Government and the National Roads Authority and also from the Council's own resources.

The total sum available for road works in 2008 is €46,229,012 which does not include public lighting or administration costs. This represents an overall reduction of €2,429,768 from the 2007 allocation and is reflective of a decrease in the National Road Authority Allocation to the County where at present there is no major capital project under construction.

The sum available for national roads is €18,637,449 and the non-national allocation is €27,591,563.

For additional information:

<http://www.kerrycoco.ie/en/allservices/roads/roadworksprogramme/>

IrelandFact—Road Safety

In 2008, 108,419 Heavy Goods Vehicle (i.e. HGVs, large trailers, buses and ambulances) and 313,959 Light Goods Vehicle tests were completed.

2008 OECD Economic Survey of Ireland—Key Challenges

Strong economic activity has been maintained and economic fundamentals remain sound. The end of the long housing expansion will, however, slow growth and presents more difficult challenges than in recent years. In the short run, the economy must adjust to lower housing activity and the risks the slowdown creates. In the long term, maintaining high rates of productivity growth is the key challenge. It is important that Ireland remains internationally competitive. Policy can support productivity growth through achieving stronger competition, improved infrastructure, more innovation, increased human capital and higher labour market participation. Ireland should ensure the stability and sustainability of its economic and social gains. A more efficient housing market would contribute to greater stability and recent international financial market turmoil highlights the need to continue to prepare for financial shocks. Maintaining a prudent fiscal policy as revenue growth slows will help to promote stability, although this will require more efforts to improve efficiency if services are to be improved. Ageing will eventually pose significant challenges that can be reduced if action is taken now to prepare the pensions system. Successful long-term integration will help to ensure that immigration is a success.

<http://www.oecd.org/dataoecd/38/12/40448199.pdf>

2006, OECD Economic Survey of Ireland

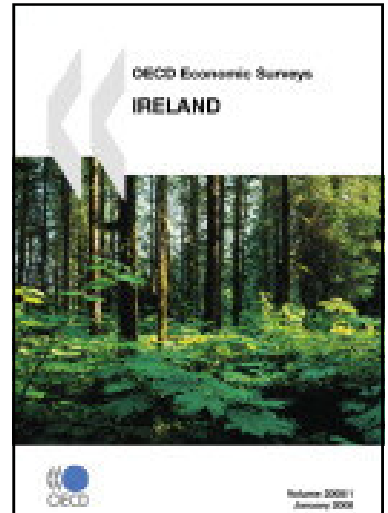
<http://www.oecd.org/dataoecd/28/47/36204794.pdf>

2003, OECD Economic Survey of Ireland.

<http://www.oecd.org/dataoecd/27/60/2955743.pdf>

2001, OECD Economic Survey of Ireland

<http://www.irishtimes.com/newspaper/special/2001/oecd01/oecd.pdf>



More OECD Information and Reports on Ireland in the following links:

http://www.oecd.org/country/0,3377,en_33873108_33873500_1_1_1_1_1,00.html

<http://www.oecdobserver.org/news/categoryfront.php/id/82/Ireland.html>

US vehicle efficiency hardly changed since Model T



The average fuel efficiency of the US vehicle fleet has risen by just 3 miles per gallon since the days of the Ford Model T, and has barely shifted at all since 1991.

Those are the conclusions reached by Michael Sivak and Omer Tsimhoni at the University of Michigan Transportation Research Institute in Ann Arbor. They analysed the fuel efficiency of the entire US vehicle fleet of cars, motorcycles, trucks and buses from 1923 to 2006.

They found that from 1923 to 1935 fuel efficiency hovered around 14 mpg (5.95 km/l), but then fell gradually to a nadir of only 11.9 mpg (5.08 km/l) in 1973. By 1991, however, the efficiency of the total fleet had risen by 42 per cent on 1973 levels to 16.9 mpg (7.18 km/l), a compound annual rate of 2 per cent.

The improvements made up to 1991 were in response to two international events – the 1973 Oil embargo by the Organisation of Petroleum Exporting Countries (OPEC), and the Iranian Revolution of 1979.

For more see:

<http://www.newscientist.com/article/dn17506-us-vehicle-efficiency-hardly-changed-since-model-t.html>



streetcar®

All the convenience of your own car but

without the cost and hassle.

Streetcar has cars parked in a dense network of dedicated spaces across London and several other UK cities, typically within a few minutes walk of your home or work. You can use one for as little as 30 minutes or as long as 6 months.

They are reserved online or by phone, and can be collected and returned 24/7 using one of our high-tech smartcards. Our fleet is made up of brand new Volkswagen Golfs and Volkswagen Polo BlueMotions. There are also some vans if you need to move bulkier items.

The cost of your usage is based on how long you have the car and how far you drive but unless you're a heavy car user, the annual cost of Streetcar will be dramatically less than owning a car and with lots of the hassle of car ownership removed.

<http://www.streetcar.co.uk/default.aspx>

“Where facts are few, experts are many”.

Donald R. Gannon

The latest edition of *Tralee Whistleblower* available

on the index page: www.traleetimes.com

Hardcopies are available in some shops

throughout the town



According to a new OECD Report there has been a sudden upturn in global sales of information and communications technology (ICT) goods in May and June suggests the ICT industry may have reached a turning point and be on the road to recovery.

The economic crisis has battered the ICT industry over the past year, it says. Production plunged by as much as 40 percent on an annual basis in Japan, Korea, China and other Asian economies in early 2009 as exports collapsed.

But billings for semiconductor makers, a bellwether for the ICT industry, rebounded sharply in May after a severe collapse in orders in the first quarter of 2009. The global ICT industry appears on the brink of recovery: most countries posted positive month-on-month production growth in May and June and inventories are running down sharply. Asian ICT exports are also growing again month-to-month: Korean producers have fared best in the region, helped by a weaker currency, with production in May down only 3% on the previous year.

ICT production levels in May and June remain down significantly from 2008 as the recent uptick has not countered the full year slide. The production decline at US and European manufacturers appears to have bottomed out, but a significant rebound is not yet underway. In the US, for example, production in June was down 15% year-on-year but stable from the previous month.

For more see:

<http://www.oecd.org/dataoecd/33/20/43404360.pdf>

THE MASTER SPEAKETH

In ancient Grecian times, when matters of great importance were to be determined it was to a place called Deplhi that people went. Here the priestess would enter into a trance and dispense the wisdom of Apollo which was divined by the observing clergy. The advice was divine and indubitable.

Where Kerry is concerned, what matter of more importance excites the mind than football and in particular a matter concerning the extent to which the art has been mastered by an individual considered by many to be a legend in his life time. The matter concerned the great Seamus Moynihan and the discussion was conducted to great animation in the presence of the Apollo of football himself, Mick O'Connell who, although wedged in the company, displayed regal indifference to the destiny of the conversation. Moynihan it was noted came on the scene the year Kerry succumbed to Clare—which Kerry people will be quick to remind the curious occurred some time after that famous baby dinosaur left his footprints along that rock in Valentia Island.

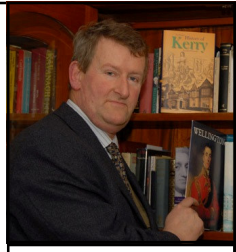
Moynihan burst on the scene as a gladiator did in the Colosseum. For many a year afterwards he was the rock on which the Kerry team stood and had the indefatigable courage of Cuchulainn who, when all around floundered on the battle field, would not yield. It was during the height of his powers that the said conversation was had.

When finally every conceivable feat of the brave Moynihan was added to the balance and the conversation was grinding to an exhausted halt, there was deathly silence as the great O'Connell himself gently turned to the company and proffered the question 'But can he kick a ball?'

Miko

Extract: History Of Tralee, Its Charter and Governance

By Gerald O'Carroll



Gerald O'Carroll

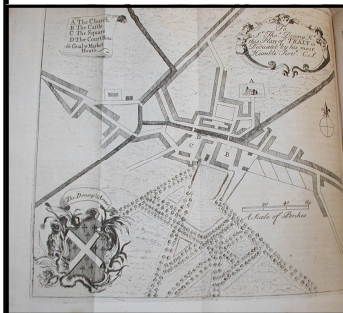
Civil War 1642: Siege of Tralee and its two Castles – the Burning of the Town

At the end of 1641, about five weeks after a great insurrection against the Ulster Plantation, rebel forces descended on Munster through the gaps in the Ballyhoura hills behind Kilmallock. A Scottish insurrection had preceded the Ulster revolt; it plunged England into civil war by bringing the Scots into alliance with their co-religionists, the Parliamentary extremists in London. In response to events in England and in Ireland, the Confederation of Kilkenny became the forum of the Irish Catholic alliance, and the seat of its military command.

Sir Edward Denny, who was Governor of the fortress of Castlemaine, delivered up that place to Captain Thomas Spring (having received the order to do so from the Governor of Kerry, FitzMaurice), and went to Tralee to raise forces for St Leger. He quitted Tralee just before the new year with a hundred men, "taking with him his lady and children, whom he sent soon after to England to his grandmother, Margaret, Lady Denny, at Bishop's Stortford". His family remained there for the duration of the war.

By kind permission of the author.

The Seige lasted 6 months and the castle was seized. The castle and town were burned to prevent it becoming the headquarters of the Crown.



Map of Tralee, 1656.

See larger image at:
[humprysfamilytree.com/
Denny/sir.edward.html](http://humprysfamilytree.com/Denny/sir.edward.html)

BLOG: <http://historytralee.wordpress.com/>

Surprise, Surprise!!!

The countryside in Co Kerry has been damaged significantly by the proliferation of one-off houses, Kerry County Council has acknowledged in new guidelines it has published to protect the remaining landscape.

Irelandfact-Tired Tyres!
An estimated 35,000 tonnes of waste tyres are generated in Ireland each year.

Beyond Endurance Expedition Antarctica

Ross 2010 Expedition

27th January—2nd March
from Ireland



Want to join us? €500 off all packages! Join members of the Tom Crean Society and a host of others on this incredible journey. Experience the spectacular Landscapes & Wildlife on an Adventure of a lifetime to Deep Antarctica....

Itinerary for Ross Re-Visited Voyage Flying from Ireland to Christchurch in New Zealand, we embark on our adventure with a visit to the Antarctic Museum and visit Lyttelton port before we set out on our 26 day voyage to Deep Antarctica crossing the Antarctic Circle to seek out McMurdo Sound where we will attempt to visit the famous expedition huts of Scott and Shackleton under the watchful eye of Mt. Erebus and explore the dramatic scenery of the massive Ross Sea. Auckland, Macquarie, Snares, Campbell and Balleny Islands are all included on our journey to and from the Antarctic Continent. We finish our voyage in Hobart, Tasmania where you will find stunning National Parks and lush vegetation before heading back home via Sydney. Some people think you are at sea for 26 days and we might go stiff crazy, no the longest duration at sea without landing is 3-4 days and happens twice on the 26 days. Please contact us and discuss the daily Itinerary.

Visit: <http://www.beyondendurance.ie/signup>

European Recycling Platform (ERP)

In 2008, ERP collected 250 tonnes of electronic waste in Kerry, that's the equivalent in weight of: 50,000 Sam Maguire Cups or 36 double decker buses

So far in 2009, end of June, ERP has collected 56 tonnes of electronic waste in Kerry, that's the equivalent in weight of: 11,200 Sam Maguire Cups or 8 double-decker busses.

Housing Completions—Co. Kerry 2002—2007

	2002	2003	2004	2005	2006	2007
PRIVATE	1623	2403	2603	2914	3721	2432
PUBLIC	215	264	139	269	232	244
TOTAL	1838	2667	2742	3183	3595	2678

Source – Annual Housing Statistics Bulletin 2007, DoEHLG

KERRY has a population of 139,835 (Census 2006) constituting 3.3% of the National Population, Kerry County Council is responsible for 3.5% of the Country's National Primary, 12.6% of the National Secondary, 4.5% of the regional and 4.7% of the local road network.

Every year 10,000 people die in road accidents in Europe due to drivers being under the influence of alcohol or drugs.

Tralee Credit Union Upcoming



Education Awards worth €10,500

If you are thinking of going to college or returning to college this Autumn, our two education awards might just be the helping hand you need.

In October, seven lucky members will receive €1,500 each towards their chosen course of study. Closing date for receipt of applications is

Wednesday 30th of September 2009.

Contact our offices for further information

Tralee Credit Union

45-47 Ashe Street

Tralee

Co. Kerry

Tel: (066) 712 2373

Phone a Loan: 1890 428 428

Fax: (066) 712 8551

e-mail: info@traleecu.ie



Irish More aware of Climate Change

Irish people have become more aware about climate change in the last year, a new EU survey released today has revealed. Two-thirds of Irish people now say they are well informed about the ways to tackle

climate change, up 7% on 2008.

Although still lagging behind the Swedes, the most environmentally aware nation in Europe (83%), at 66%, Irish citizens feel better informed than the EU average (55%).

The "myth" that the Irish are less concerned about the environment than their European counterparts "also takes a knock", according to the European Commission representation in Dublin.

Irish citizens ranked 4th highest in the EU for making a personal contribution to fighting climate change. Some 74% of Irish people are taking action of some kind, with only citizens of Sweden, the UK and Slovenia being more engaged.

In spite of the economic crisis, 58% of Irish people still feel that climate change is one of the most serious problems facing the world.

Some 68% of Irish people think that fighting climate change will have a positive effect on the economy and create jobs.



<http://change.ie/en/Blog/Dates/2009/7/Irish-more-aware-about-climate-change/>

The world market for marine industries is valued at €869 billion.

**TOTAL HOUSING COMPLETIONS
in IRELAND
1970—2008 (selected years)**

YEAR	TOTAL
1970	13887
1975	26892
1980	27782
1985	23948
1990	19539
1995	30575
2000	49812
2002	57695
2004	76954
*2006	93419
2008	51724

*In the 2006 figures, about 5,000 house were actually completed in 2005

Source: <http://www.viron.ie/en/Publications/StatisticsandRegularPublications/HousingStatistics/>

The European Union lists 9 individual airline carriers whose operations are fully banned in the European Union (14-07-2009)

Air Koryo from the Democratic People Republic of Korea (DPRK), Air West from Sudan, Ariana Afghan Airlines from Afghanistan, Siem reap Airways International from Cambodia, Silverback Cargo Freighters from Rwanda, Motor Sich, Ukraine Cargo Airways, Ukrainian Mediterranean Airlines and Volare from Ukraine; all carriers (246) from 12 countries - Angola, Benin, the Democratic Republic of Congo (DRC), Equatorial Guinea, Gabon, (with the exception of three carriers which operate under restrictions and conditions), Indonesia (with the exception of the four carriers removed from the list), Kazakhstan (with the exception of one carrier which operates under restrictions and conditions), the Kyrgyz Republic, Liberia, Sierra Leone, Swaziland and Zambia; 7 air carriers which are allowed to operate under restrictions and conditions - TAAG Angola Airlines, Air Astana from Kazakhstan, Gabon Airlines, Afrijet and SN2AG from Gabon, Air Bangladesh and Air Service Comores.

NOTE: all carriers covered by this and previous updates continue to be subject to prioritised ramp inspections at EU airports in order to ensure their consistent adherence to the relevant safety standards.

<http://europa.eu/>

Agricultural Colleges Oversubscribed—June 2009

The number of students applying to agricultural colleges is up 40% on last year, with in excess of 900 applications from prospective students. With the huge number of applications, some college principals say they will have to turn people away for the first time since the late nineties



The main driver behind the increased interest is the current recession, with limited job prospects for school leavers, and redundant construction workers returning to agricultural education. There has been a marked increase in the age profile of prospective students, with many now returning to farming after years working elsewhere.

http://www.qualifax.ie/index.php?option=com_content&view=article&id=90:ag-colleges-over-subscribed&catid=29:news&Itemid=6

option=com_content&view=article&id=90:ag-colleges-over-subscribed&catid=29:news&Itemid=6

Direct employment in the aquaculture sector within the EU accounts for approximately 65,000 full-time jobs.

Spoken Like a True Kerryman!

When asked recently if he wanted to travel to Croke Park for the match between Kerry and Dublin on Monday 3rd August. The guy replied, "Ah, sure I wait for the final in September."

Kerry Archaeological & Historical Society

August

Sunday 10

Kilbonane Medieval Church/Ballymalis Meet Listry Church, 2.30pm,

Sunday 31

"SHANID ABU" & Foynes Meet Flying Boat Museum, Foynes 2.30pm.

September

Sunday 14

In the Footsteps of Mochuda Meet Castlemaine, Griffins Pub Car Park, 2.30pm.

UK No. 1 Hit Single

5th Aug. 1989

Swing the Mood

Jive Bunny & The Mastermixers
5 Weeks

A 1st UK No 1 for these Yorkshire DJs who put together a string of old hits (including Glenn Miller's "In The Mood"), overlaid with a dance beat.

**New format for
www.traleetimes.com
coming soon**

**EU Diesel Prices
(Automotive Gas Oil)**

(selected countries)
July 13th 2009

COUNTRY	PRICE €
Ireland	1.03
UK	1.20
Sweden	0.99
Finland	1.01
Denmark	1.01
Germany	1.05
Netherlands	0.99
France	0.99
Italy	1.08
Spain	0.92
Portugal	1.02
Belgium	0.92
Luxemburg	0.87

NOTE: Prices communicated by the Member States are the most representative prices for their market

Source:

http://ec.europa.eu/energy/observatory/oil/doc/prices/map/2009_07_13_dgtren_oil_prices_gasoil.pdf

South West Hygiene and Swine Flu Advice

South West Hygiene have been in contact with the following information for those of you who may be concerned about Swine Flu.

The best thing you can do to protect yourself is to follow good hygiene practices.

These will help to slow the spread of the virus and will be the single most effective thing you can do to protect yourself and others from infection.

When you cough or sneeze it is especially important to follow the rules of good hygiene to prevent the spread of germs:

- Always carry tissues.
- Use a clean tissue to cover your mouth and nose when you cough and sneeze.
- Bin the tissue after one use.
- Wash your hands with soap and hot water, and use alcohol gel hand rub regularly.

South West Hygiene,

19 Lioscarrig Drive, Caherslee, Tralee, Co. Kerry

Kevin: 087 2646896

Office: 066 7127488

Anthony: 087 2896946

Fax: 066 7127619

Email: swhygiene@eircom.net

For more information and advice and products, see:

<http://www.southwesthygiene.ie/index.htm>



Birdfeeders

Amazingly, I have never been as busy filling a birdfeeder as I have this summer. Once a week I have had to refill it with substantial amounts of feed. So do be aware that 'others' may depend on you! If you have a birdfeeder check it often.

Drive With Lights ON

It has been proven on many occasions that driving with your lights ON does reduce the possibility of accidents occurring.

<http://www.arrivealive.co.za/pages.aspx?i=1819>

CALL FOR ENTRIES FOR 2ND ROUND OF SAMHLAIOCHT'S OPEN SUBMISSION JURIED PHOTOGRAPHY COMPETITION – THEME 'SUMMER LIGHT'

Adjudicated by an award winning panel of fine art and commercial photographers.

Samhlaiocht is issuing a call for photographs for the second round of its Open Submission Photography Exhibition competition.

The theme for the second round is 'Summer Light' and the closing date is **Friday, August 28th**.

The exhibition will take place from the October 1st until October 23rd, 2009.

Please include your name, address, a contact phone number, email and the title of each photograph submitted with both hard and soft copies of the photographs.

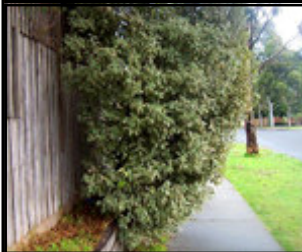
The closing date for entries to the second heat is **Friday, August 28th**.

For more information on Samhlaiocht please log on to www.samhlaiocht.com or call **066 712 9934**

If you would like to comment on any of the articles included in this edition, please do so to:

editor@traleetimes.com

or if you wish to have an article Included, please let us know.



Danger—Overhanging Vegetation!

Property owners should be aware that trees or bushes that overhang your boundary wall onto public footpaths and roads are a real hazard.

- Walkers or users of footpaths may be injured
- Signposts and notices may be obscured
- Public lighting may be adversely affected

In rural areas, land owners are obliged to cut back hedging etc. (at certain times of the year) and surely this should also apply to urban land owners.

In some other jurisdictions there are laws in place to ensure that all urban property owners comply with certain standards in this regard.

After all keeping your vegetation under control will:

- ⇒ naturally thicken the growth of the hedges or bushes
- ⇒ enhance the attractiveness of your property
- ⇒ allow you to maintain it more easily and cheaply
- ⇒ keep the area more secure through better public lighting
- ⇒ increase the safety of all road users
- ⇒ prevent unnecessary injuries etc.....

Thom's Almanac & Official Directory for the Year 1862.

KERRY, a maritime county in Munster province. Boundaries: N., the estuary of the Shannon, E., Limerick and Cork, S., Cork, and Kenmare estuary, W., the Atlantic Ocean. Greatest length, N and S, 60 miles; greatest breadth E and W., 58 miles, comprising an area of 1,853 square miles, or 1,186,126 acres, of which 414,614 are arable, 726,775 uncultivated, 11,169 in plantations, 807 in towns, and 32,761 under water.

The principal bays along the coast are Tralee, Brandon, Smerwick, Dingle, Ballinskellig, and Kenmare estuary. The principal islands are Valentia, population 2,920, the Blasquets, and the Skellig rocks, on one of which there is a Lighthouse showing 2 fixed lights.

The face of the country is formed of mountain ranges, intersected by deep valleys, with some level ground. The summit of Carran Tuail, the highest mountain in Ireland, is 3,410 feet above high sea level.

For more....visit:

<http://www.libraryireland.com/articles/KerryDirectoryThom1862/index.php>

SEPTEMBER CHILDREN RETURN TO SCHOOL

DRIVERS BEWARE!